

SmartBioSurface® Slides

Where long-term storage
meets analytical reliability



SmartBioSurface® slides, thanks to their **nanostructured TiO₂ coating**, promote **cell adhesion** and preserve cellular **morphology** of **non-adherent cells** (i.e., PBMCs, suspension cells, and rare cell populations).

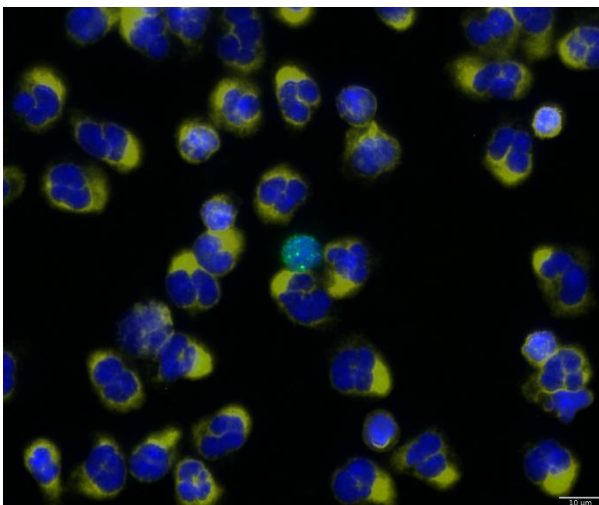
Key features

- Compatible with **Immunofluorescence (IF)**, **brightfield (BF) staining**, and **Fluorescence in Situ Hybridization (FISH)**
- Suitable for storage at **-80 °C**
- Designed for reliable handling of **suspension** and **rare cell populations**

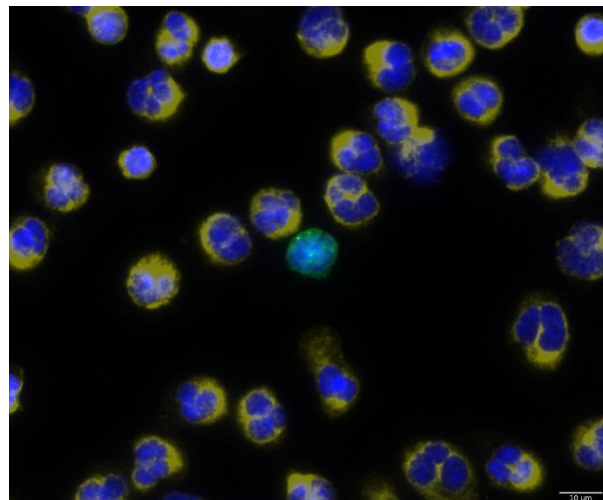
Clinical sample

- IF analysis of **metastatic breast cancer** patient samples after 10 and 45 months of storage at -80°C

10 months storage



45 months storage



Representative IF images showing CTC detection in metastatic breast cancer patient samples after 10 and 45 months of storage at -80°C. Blue: DAPI nuclei; Green: epithelial markers; Yellow: hematopoietic markers

Long-term preservation of morphology and IF signal

- Preserved **morphology** and stable **immunoreactivity** over time
- Conserved **epitope integrity** for downstream IF analyses
- Reliable **detection** of rare cells, including **CTCs**, after nearly **4 years of storage**
- Suitable for **long-term in situ biobanking** of **blood-derived samples** at -80 °C

Tethis S.p.A.

Via Francesco Olgiati 5, 20143 Milan, Italy

E-mail: contact@tethis-lab.com

Visit us

www.tethis-lab.com